

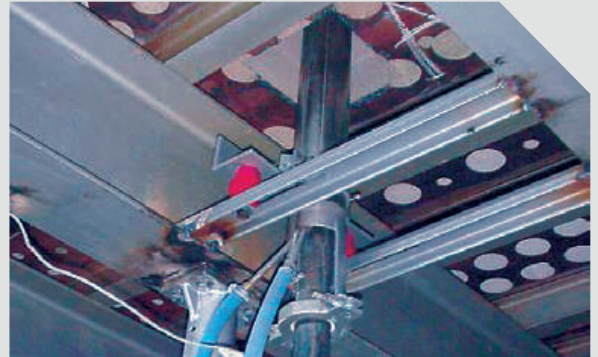
FURNACE EQUIPMENT

BOOSTER SYSTEM

By exploiting the glass property to be electric conductor at high temperature, it is possible to feed some additional electric power by means of molybdenum electrodes immersed in the glass and connected to a variable voltage electric transformer.

The effect of the extra power is to enhance the glass molten, to increase the pull, the quality and to reduce the NO_x emission.

- Bottom or Sidewall
- Medium voltage or Low voltage



TANK AIR COOLING STATION

Necessary to cool the melting tank soldier blocks to prolong the furnace life and to prevent leakage.



THROAT AIR COOLING STATION

Necessary to cool the throat refractory blocks.

